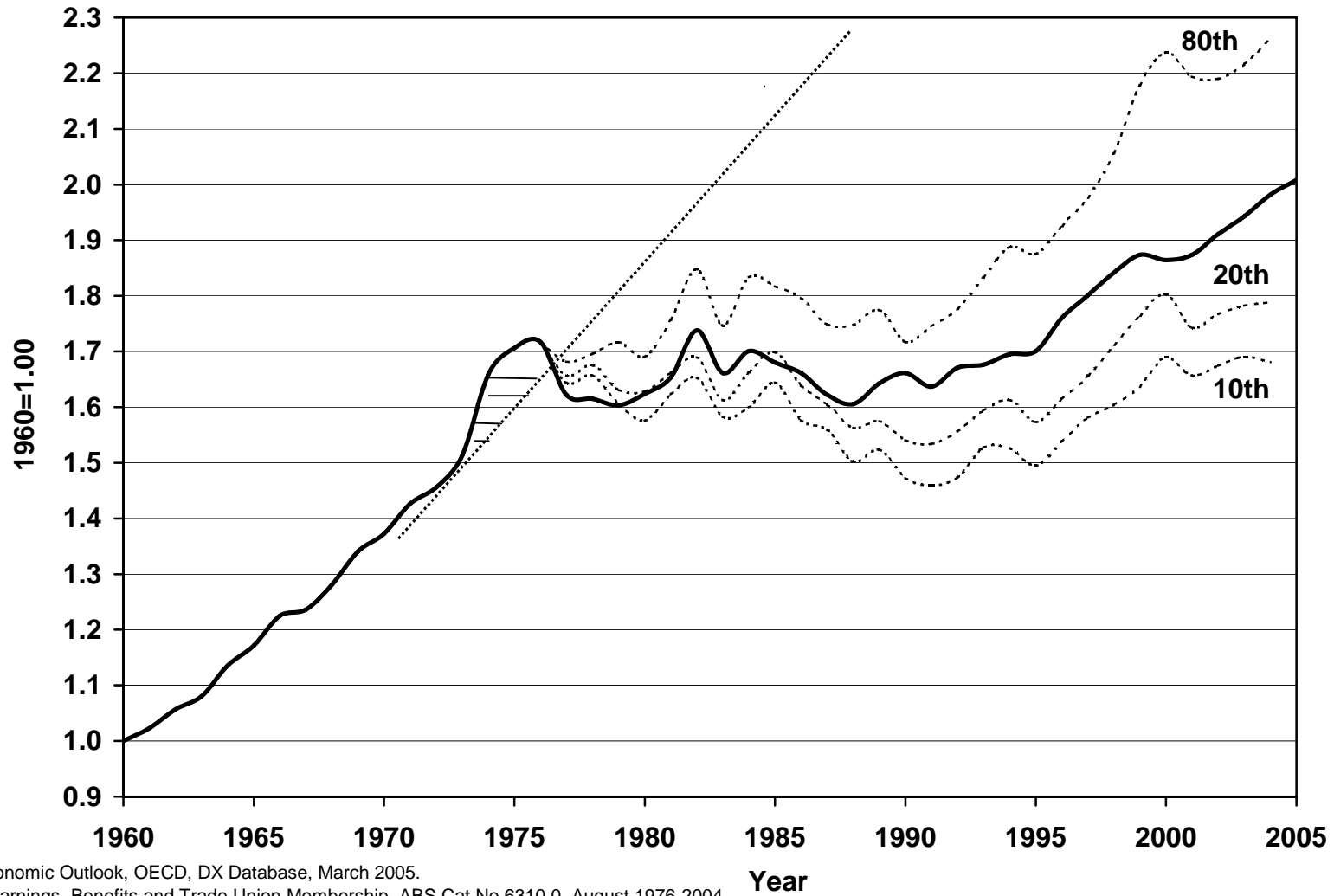
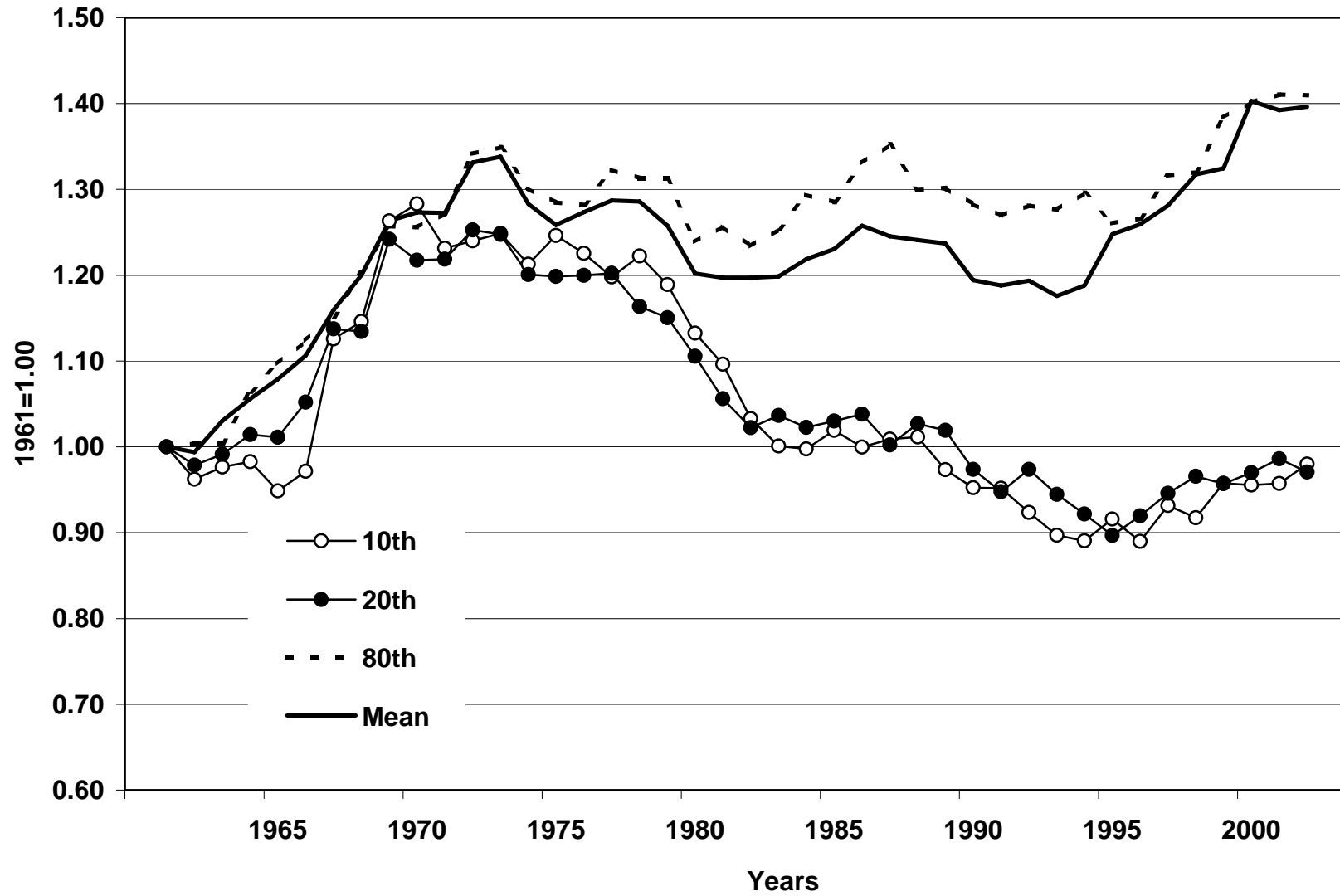


**Australia, Real Total Compensation Per Employee Index
Adult Male FT Weekly Earnings, 10th, 20th and 80th Decile, 1960-2005**

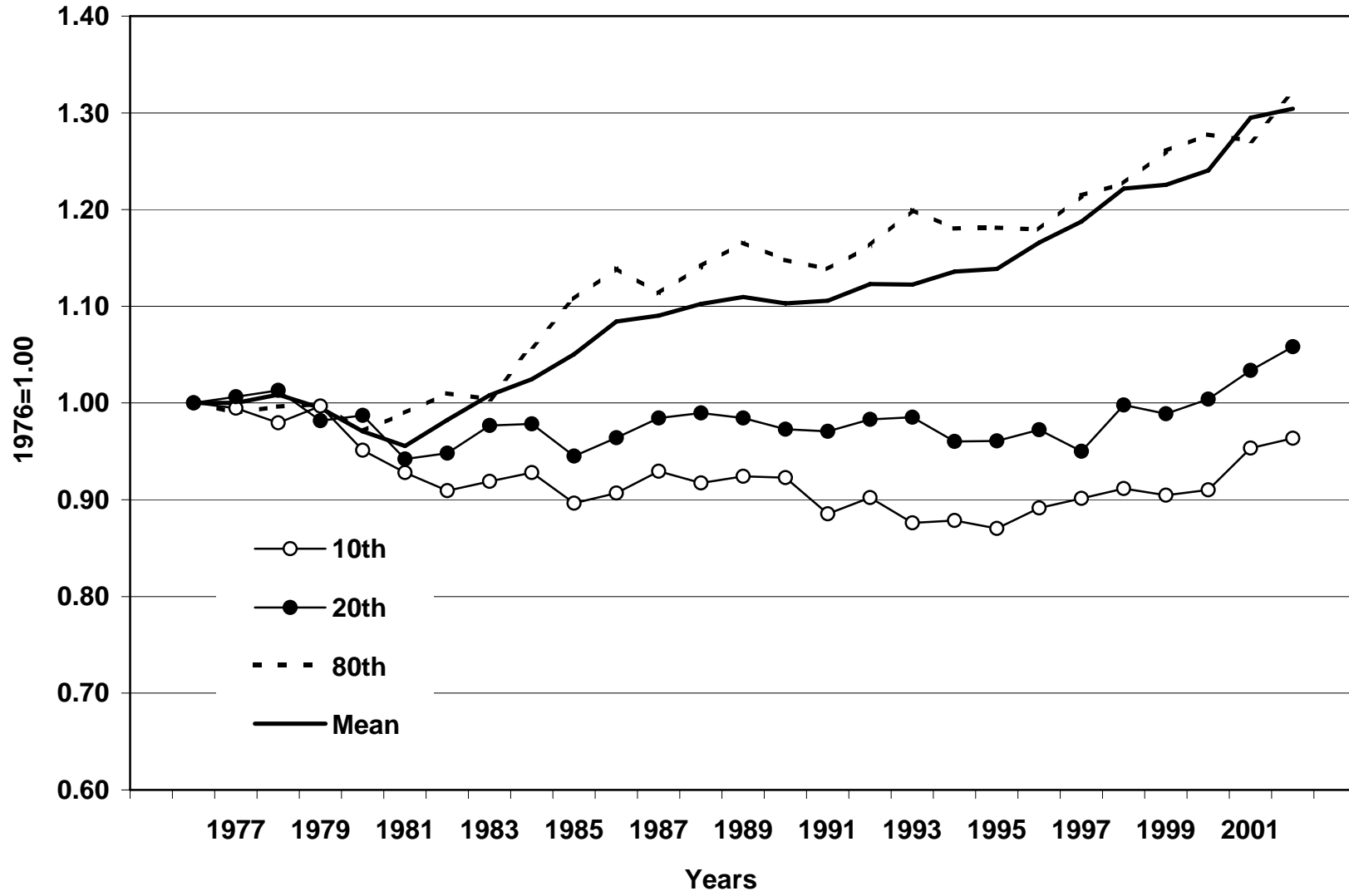


Source: Economic Outlook, OECD, DX Database, March 2005.
Employee Earnings, Benefits and Trade Union Membership, ABS Cat No 6310.0, August 1976-2004.
Note - All Adult Male FT Weekly Earnings indexed at 1.7 in 1976.

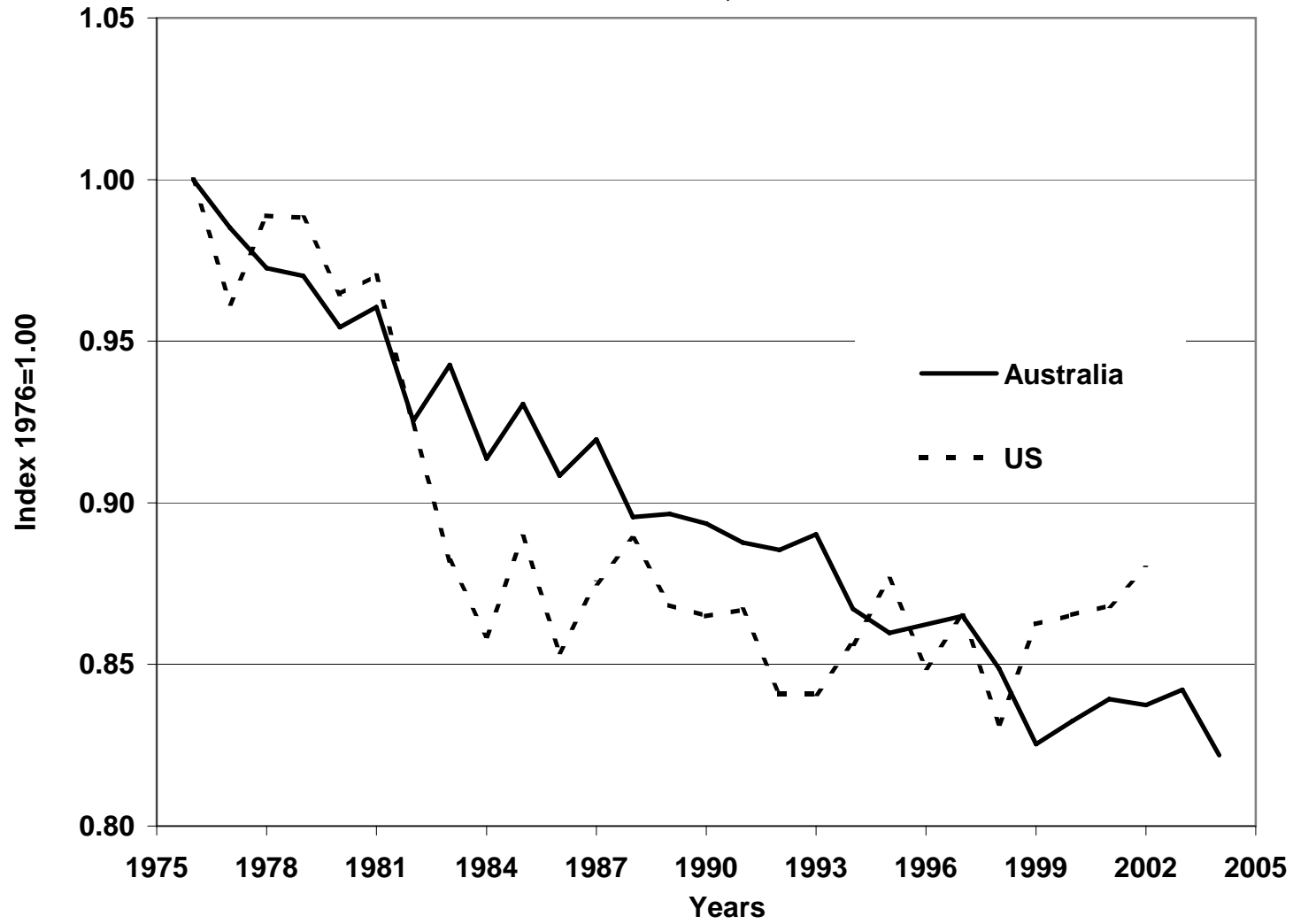
US, Adult Males 20-64, Full-time Full-year, Real Average Weekly Wage
Index 1961=1.0, 1961-2002



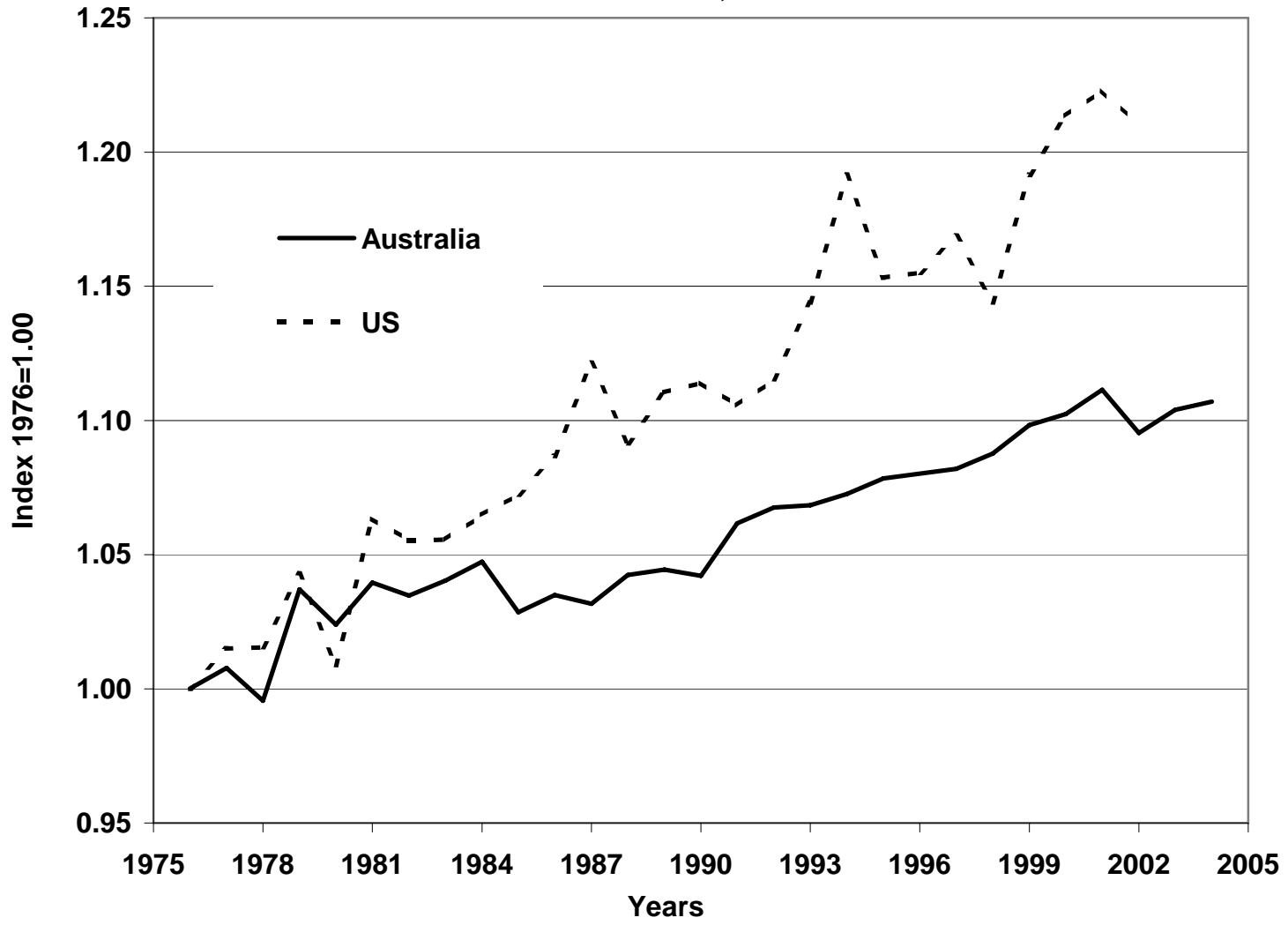
US, Adult Females Full-time Full-year, 20-64, 1976-2002
Real Average Weekly Wage, Index 1976=1.00



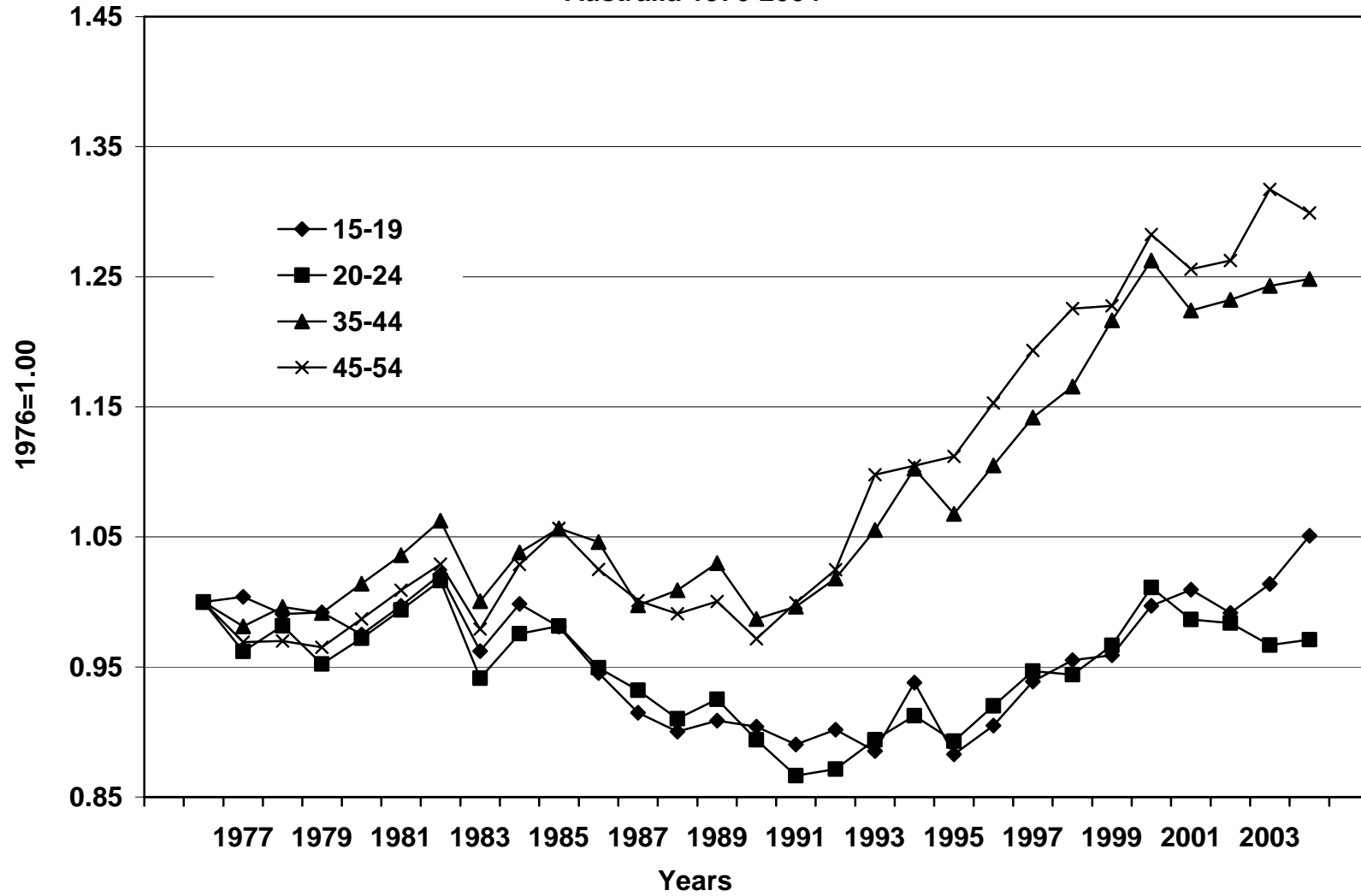
Adult Males
Index of Weekly Earnings 10th/50th Percentile
Australia and US, 1976-2004



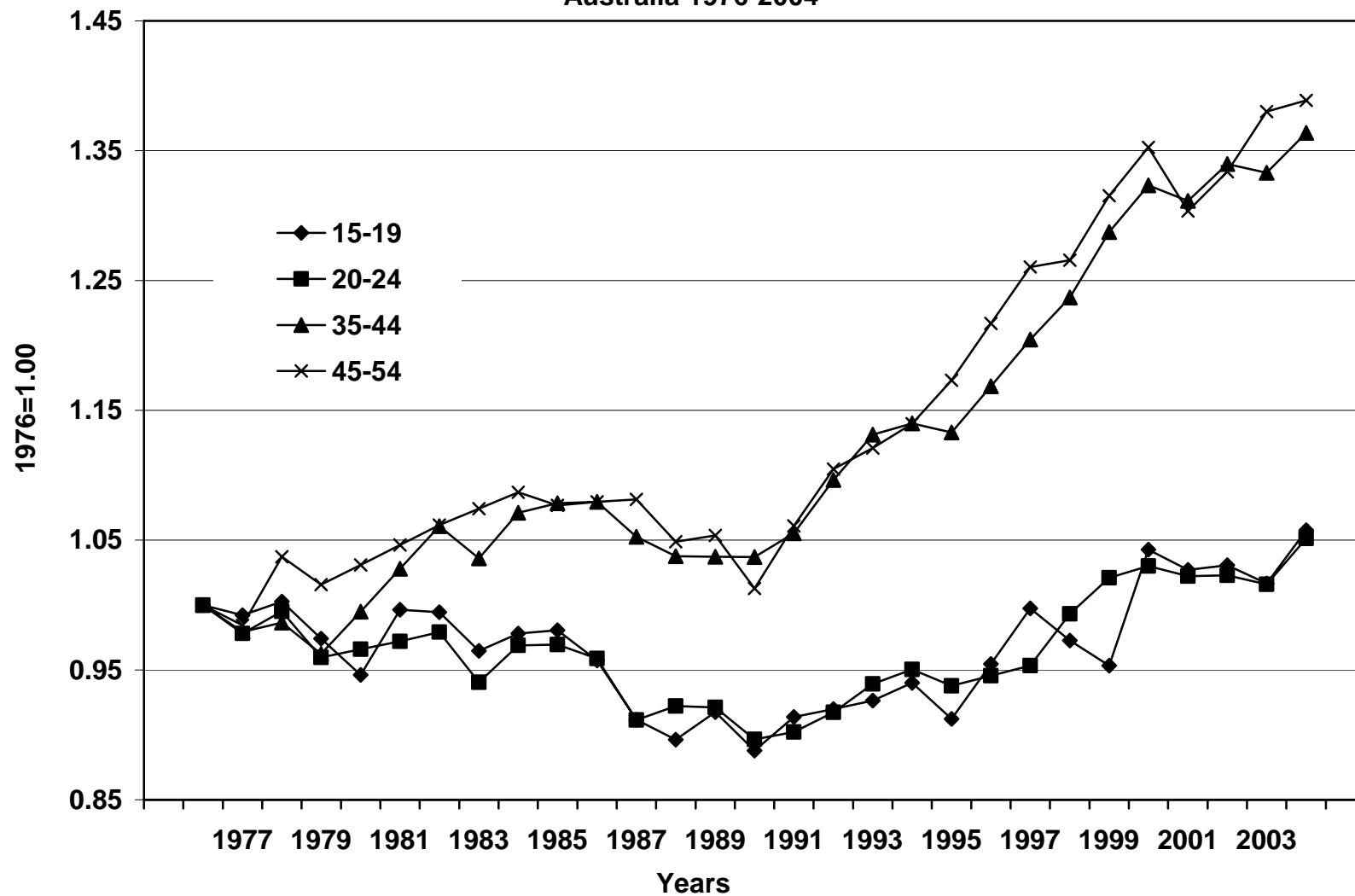
Adult Males
Index of Weekly Earnings 80th/50th Percentile
Australia and US, 1976-2004



Males Employed Full-Time
Index of Real Weekly Earnings By Age
Australia 1976-2004



Females Employed Full-Time
Index of Real Weekly Earnings By Age
Australia 1976-2004



Australia, Employment Status by Sex, 15-64
1966-2004

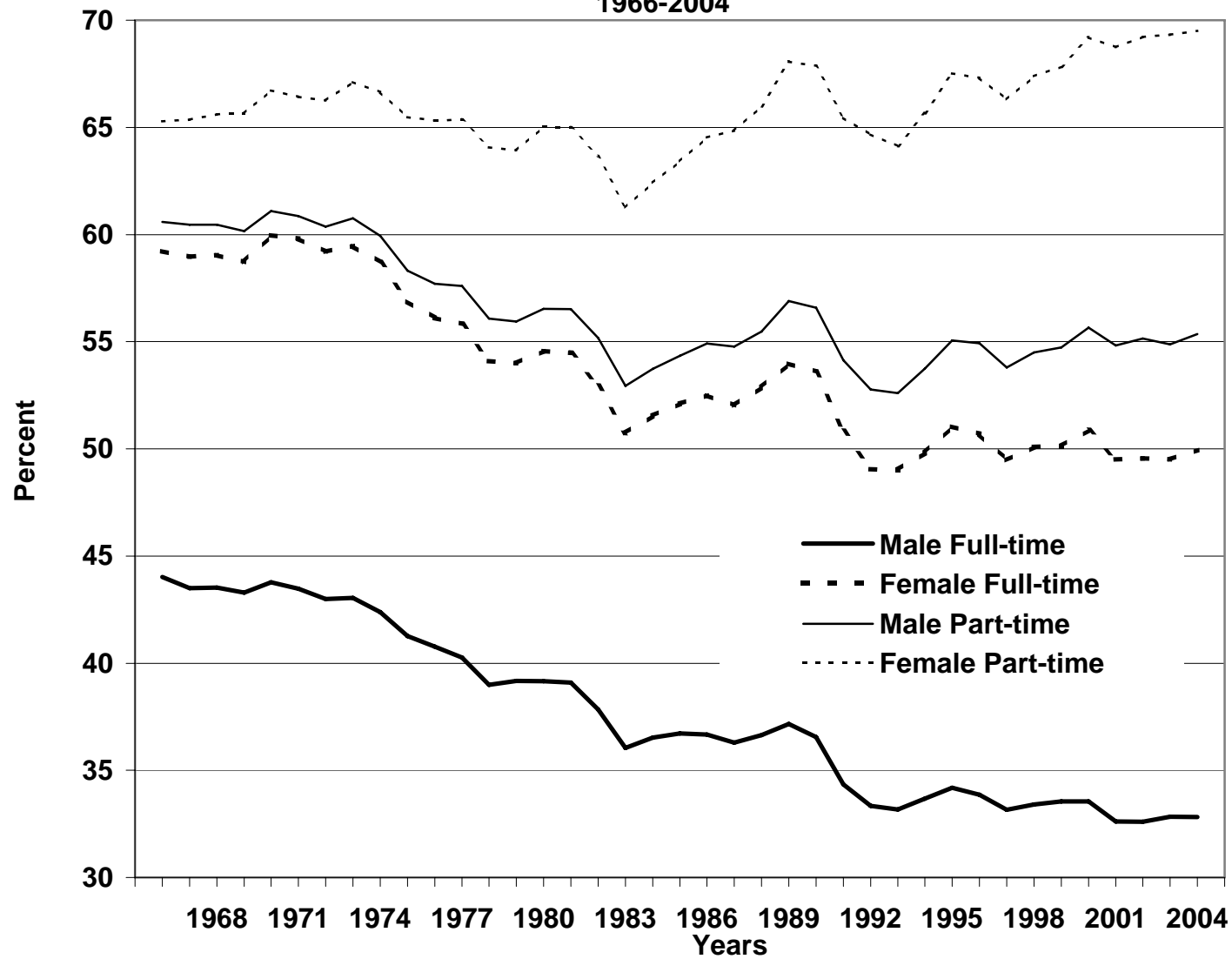


Table 1
Males, 25-59 by Age Group and Skill Level
1981 and 2001 Australia Census

	Percent 1981 Census		Percent 2001 Census	
	Skilled	Unskilled	Skilled	Unskilled
<i>Proportion Employed Full-Time</i>				
25-34	80	76	77	60
35-49	87	79	80	62
50-59	85	69	73	52
Total 25-59	83	75	77	59
<i>Single -</i>				
<i>Proportion Employed Full-Time</i>				
25-34	73	64	73	53
35-49	83	64	73	51
50-59	76	53	68	42
Total 25-59	75	62	72	50

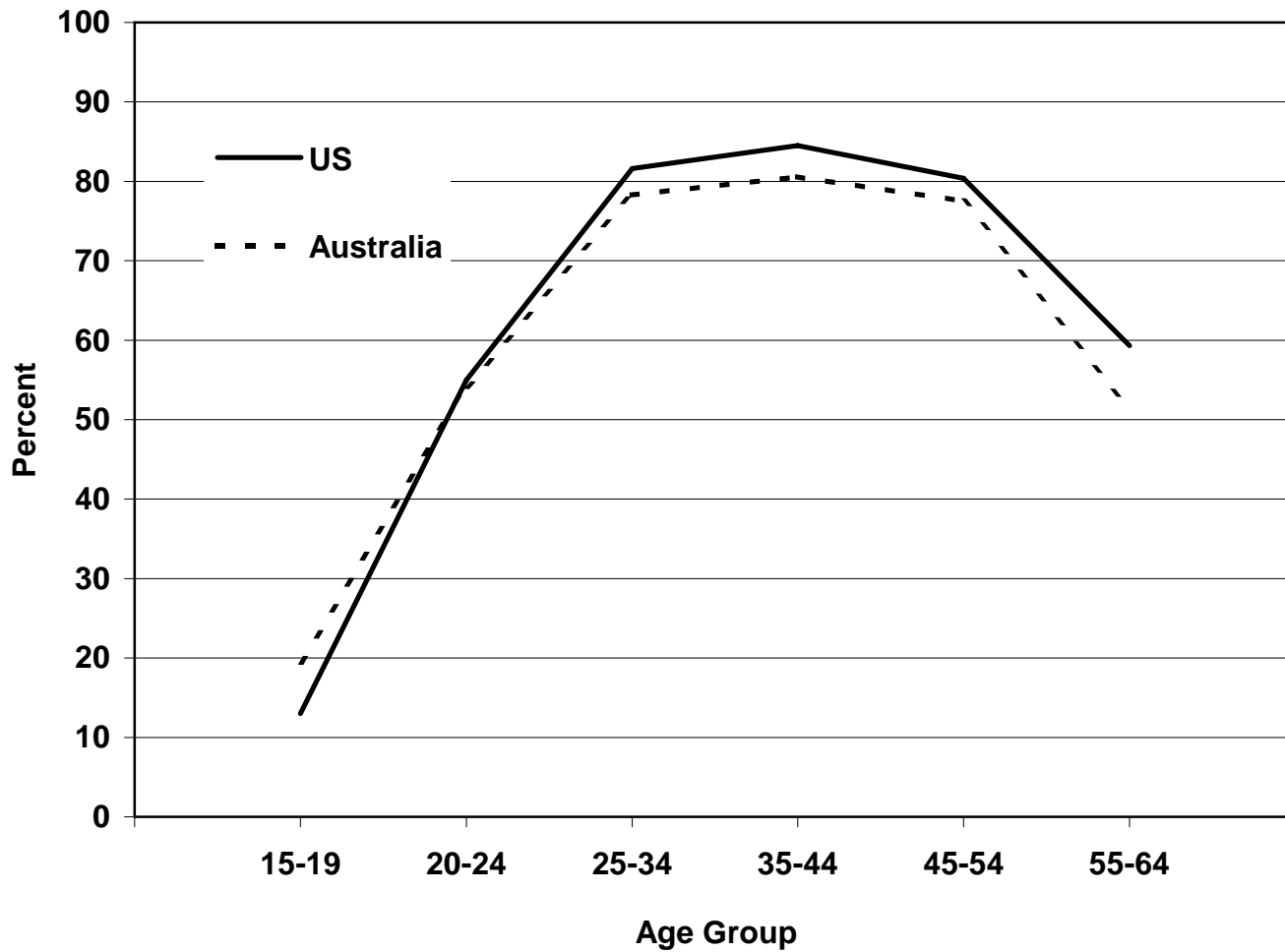
Definitions -

Skilled is defined where education level is bachelor degree or higher, Unskilled defined as having no qualifications.

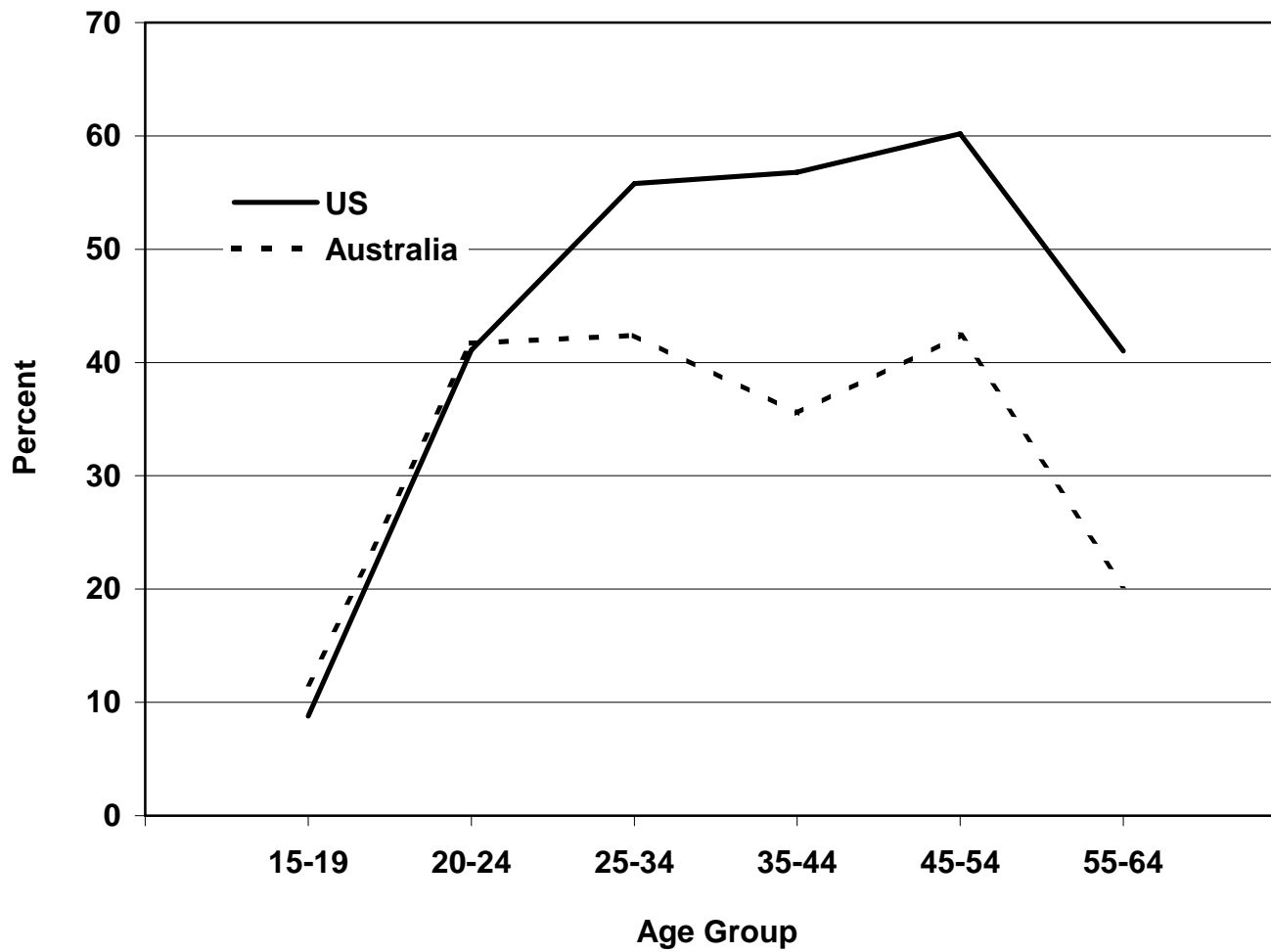
Full-time is working more than 35 hours per week.

Source: Census of Population and Housing, Household 1% Sample File, Australia, 1981 and 2001.

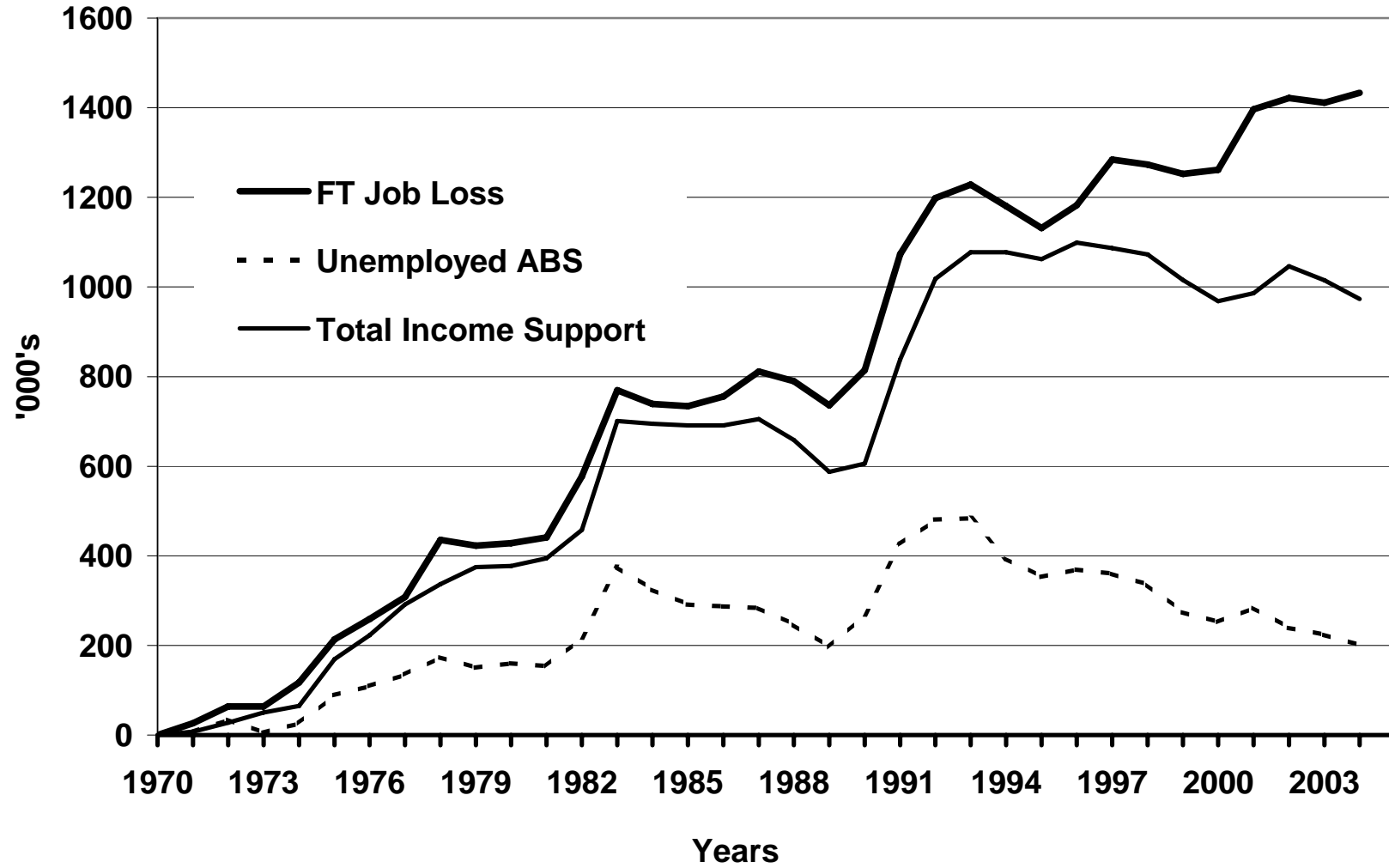
Male Full-time Employment to Population Ratio
by Age Group
2004



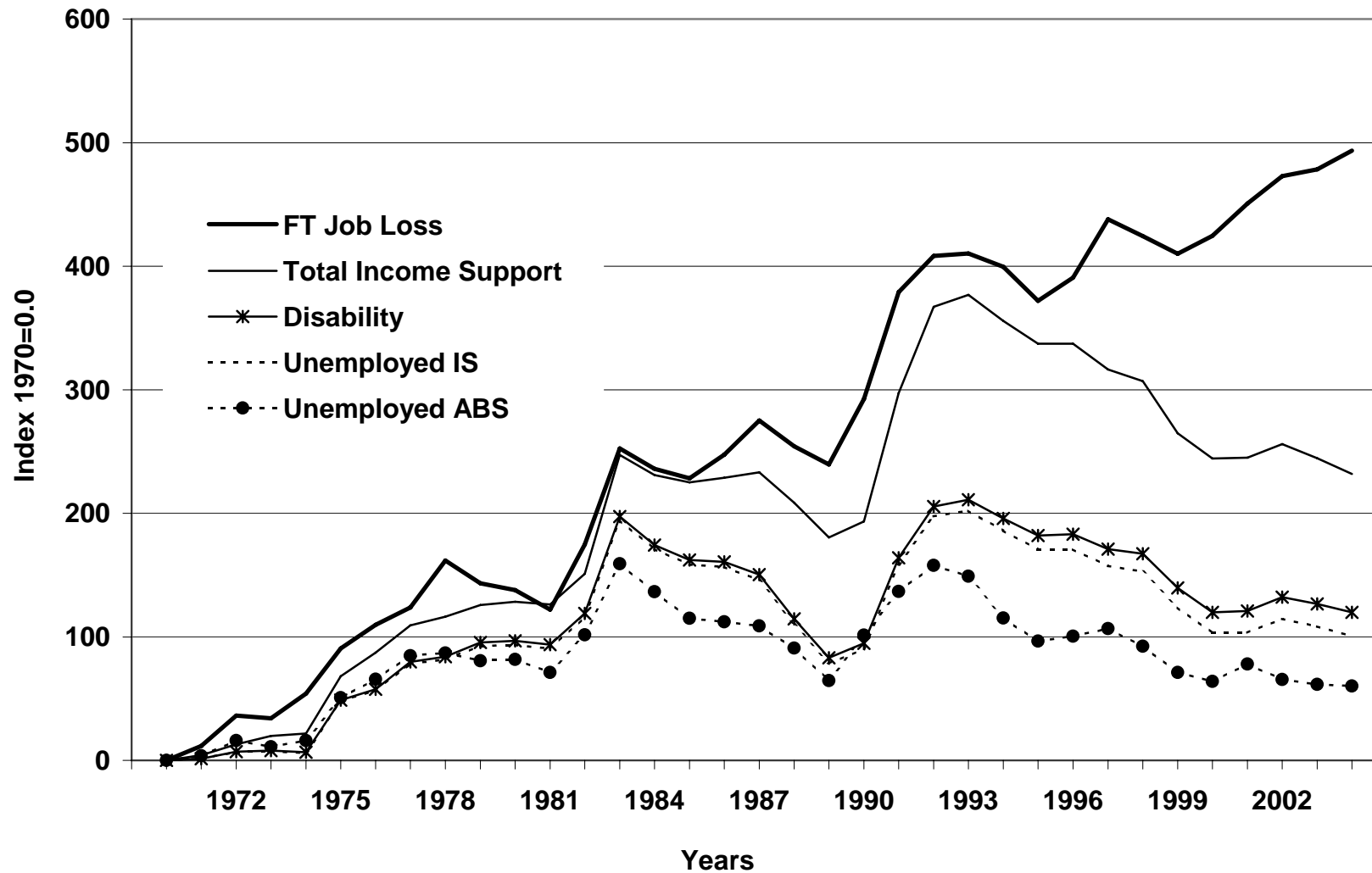
**Female Full-time Employment to Population Ratio
by Age Group
2004**



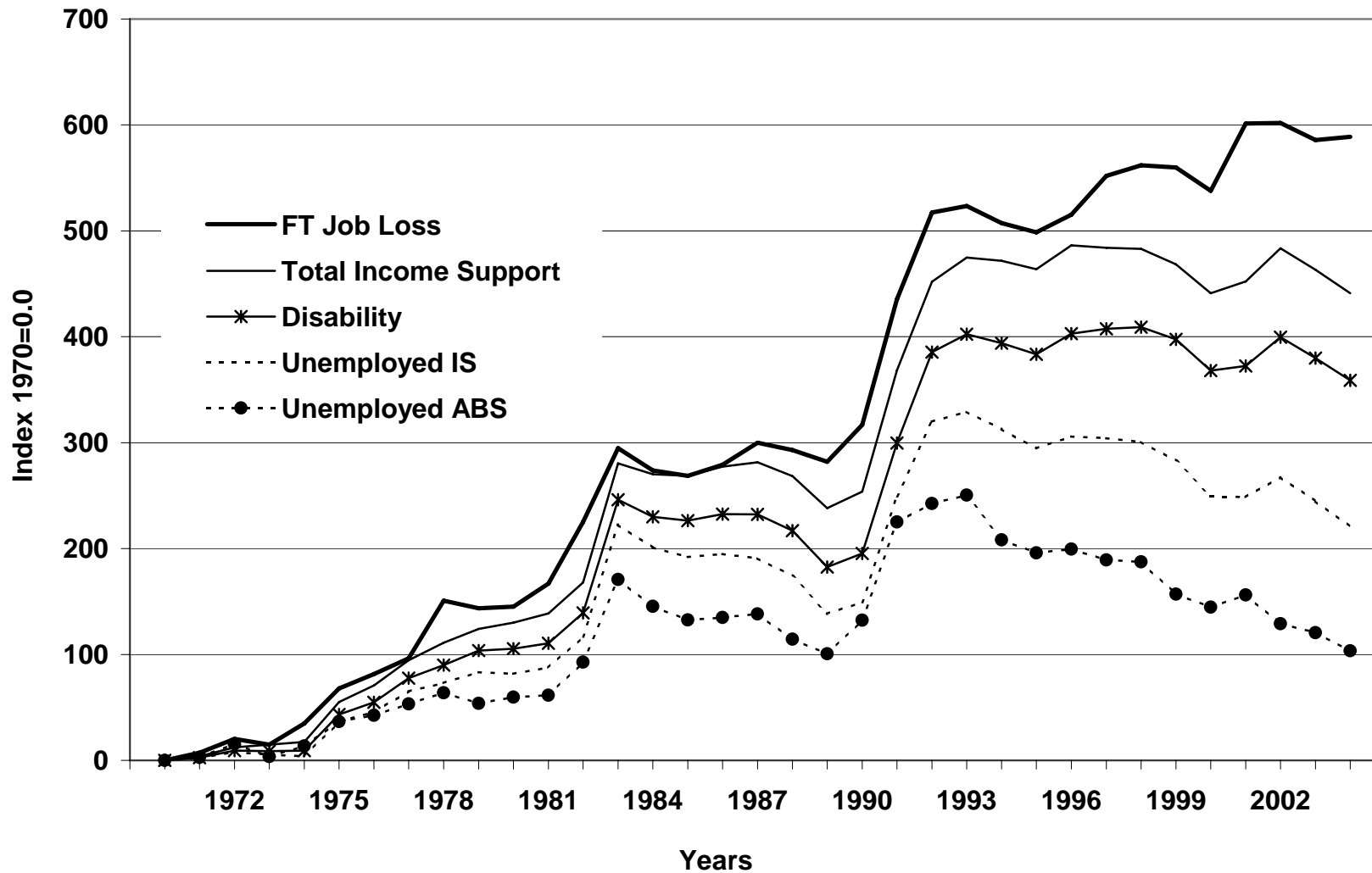
Males 15-64 1970-2004



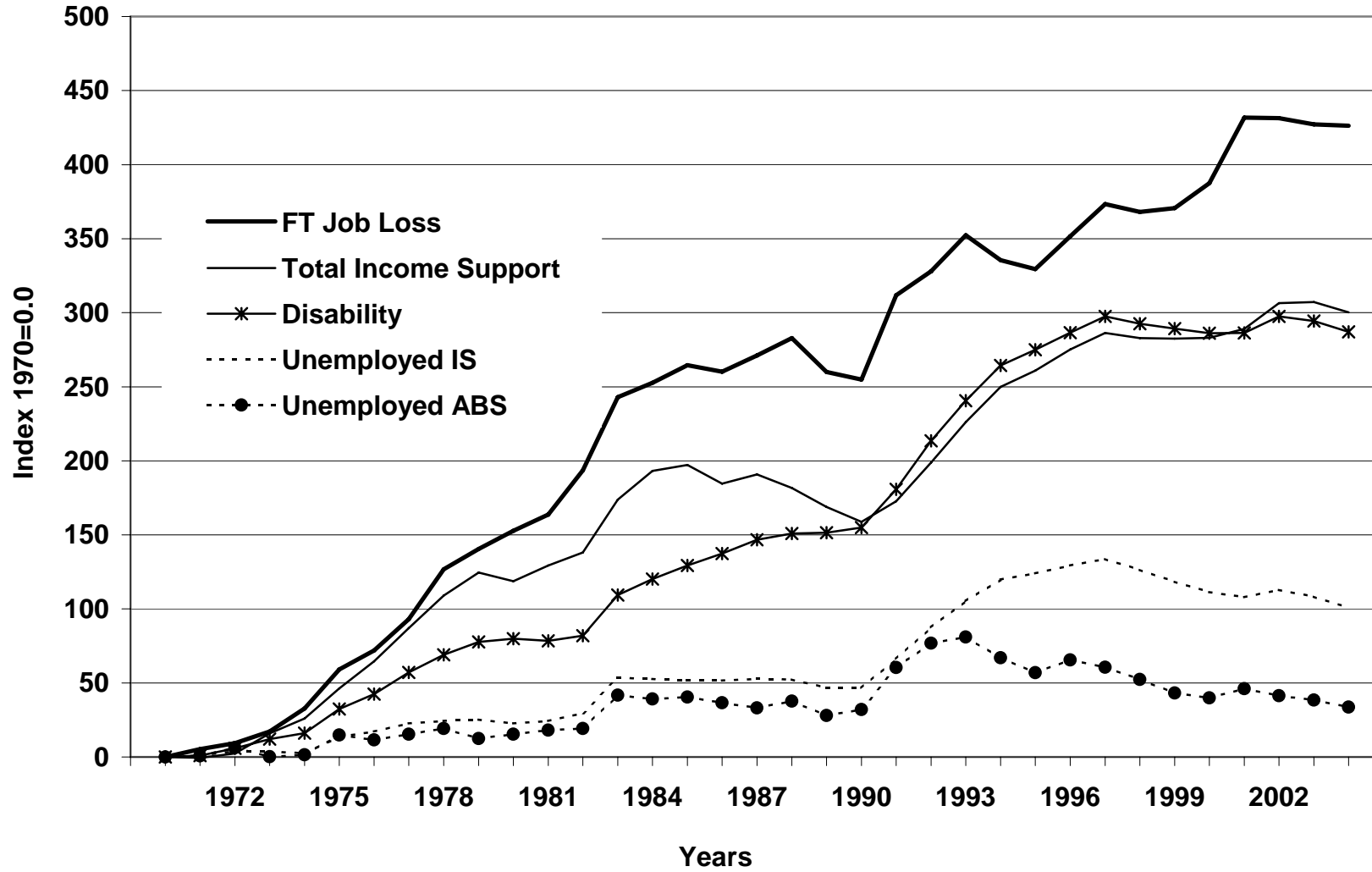
**Males 15-24
1970-2004**



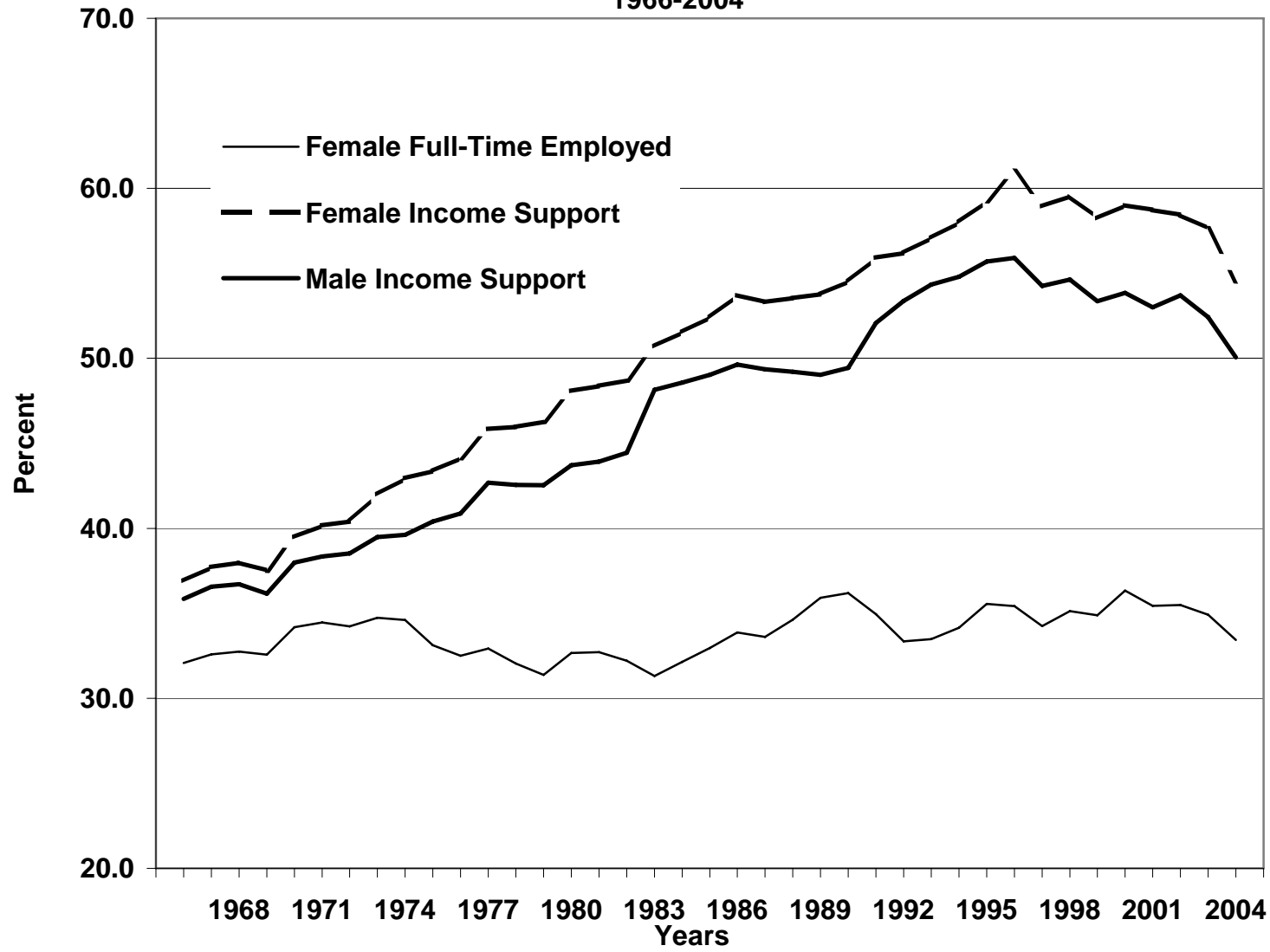
Males 25-49
1970-2004



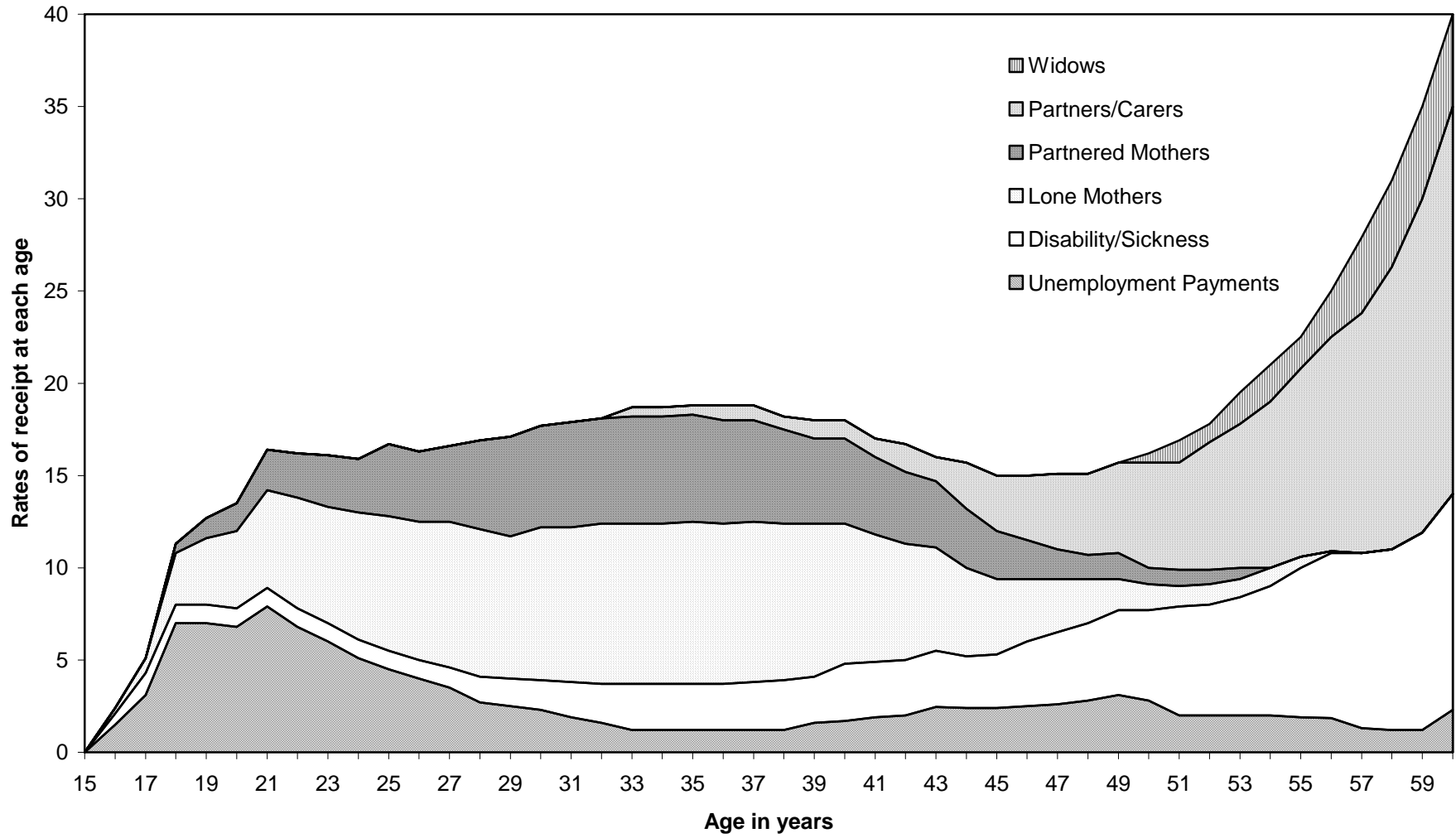
Males 50-64
1970-2004



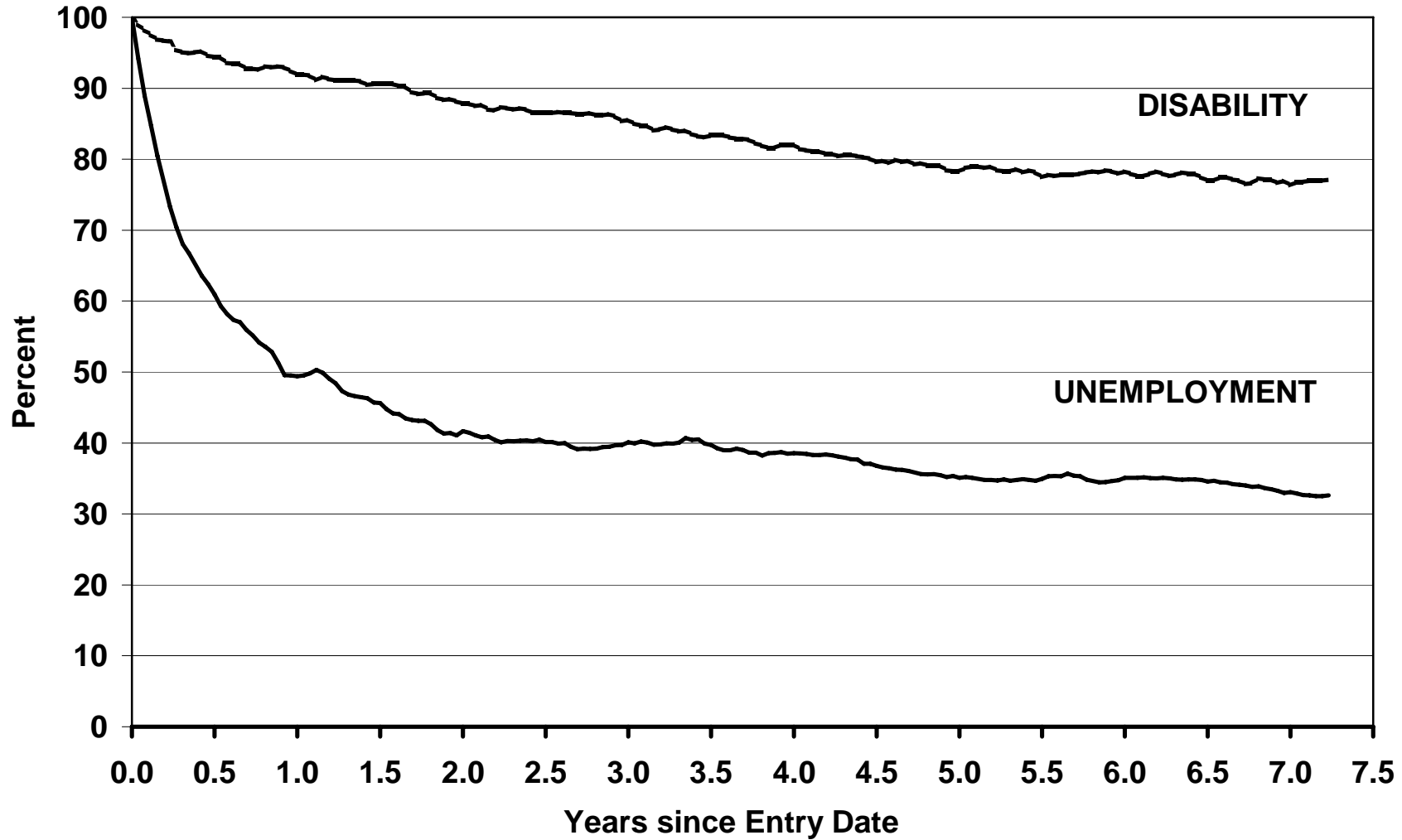
**Workforce Age, Labour and Welfare
1966-2004**



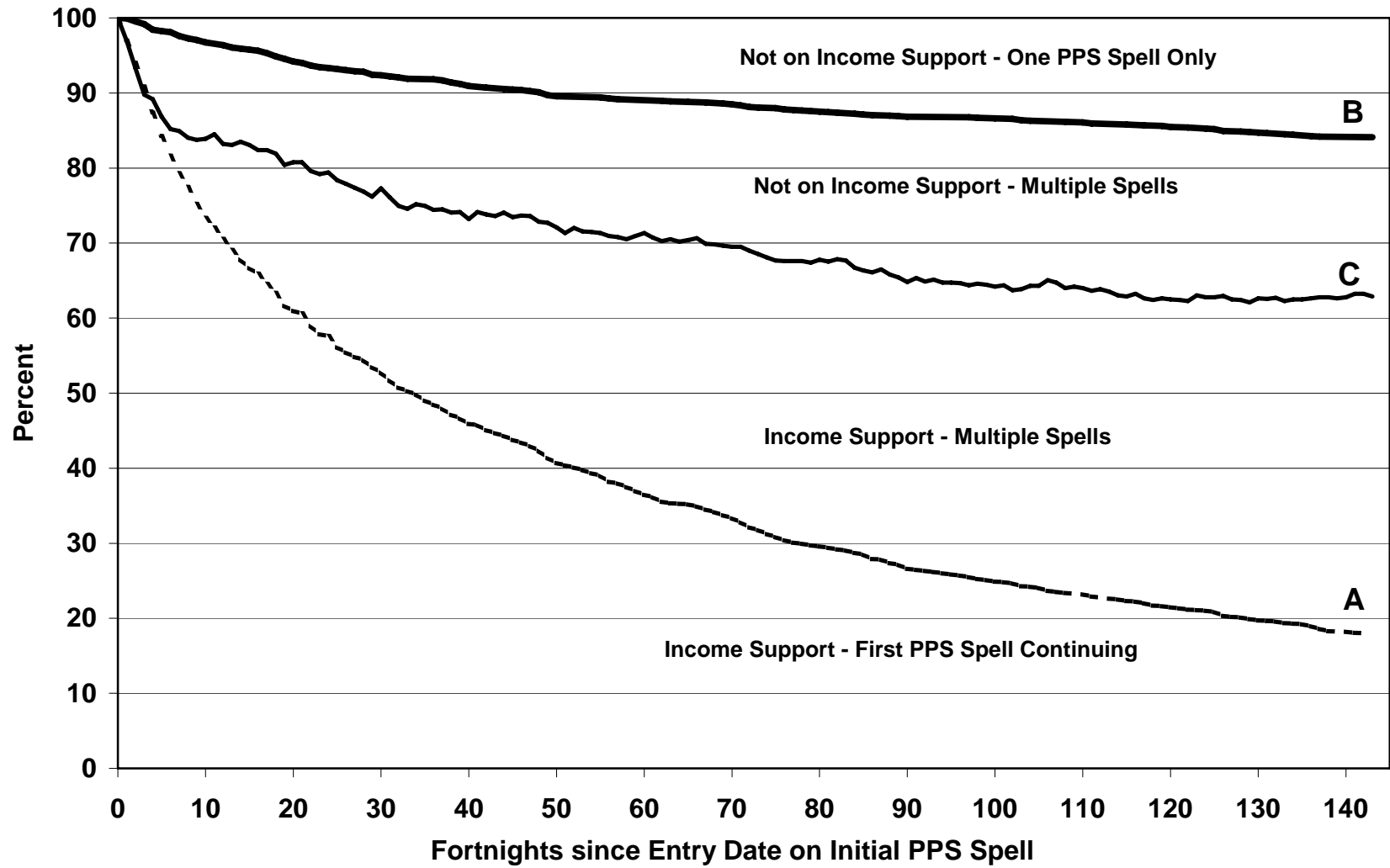
Women
Rates of Receipt of Income Support by Age and Payment Type, June 1999



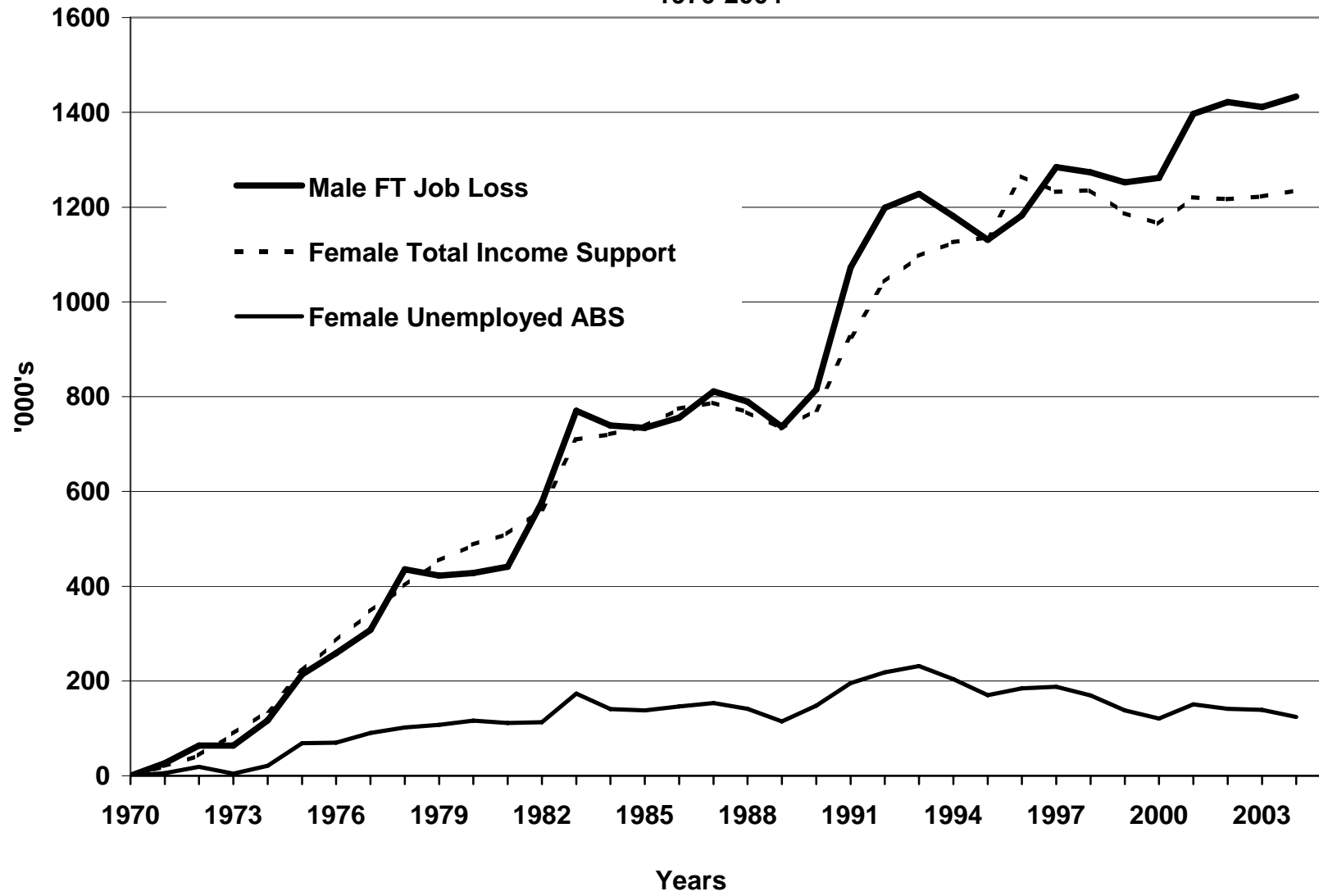
1995 UB and DSP Inflow Proportion on Income Support, Males 15-64



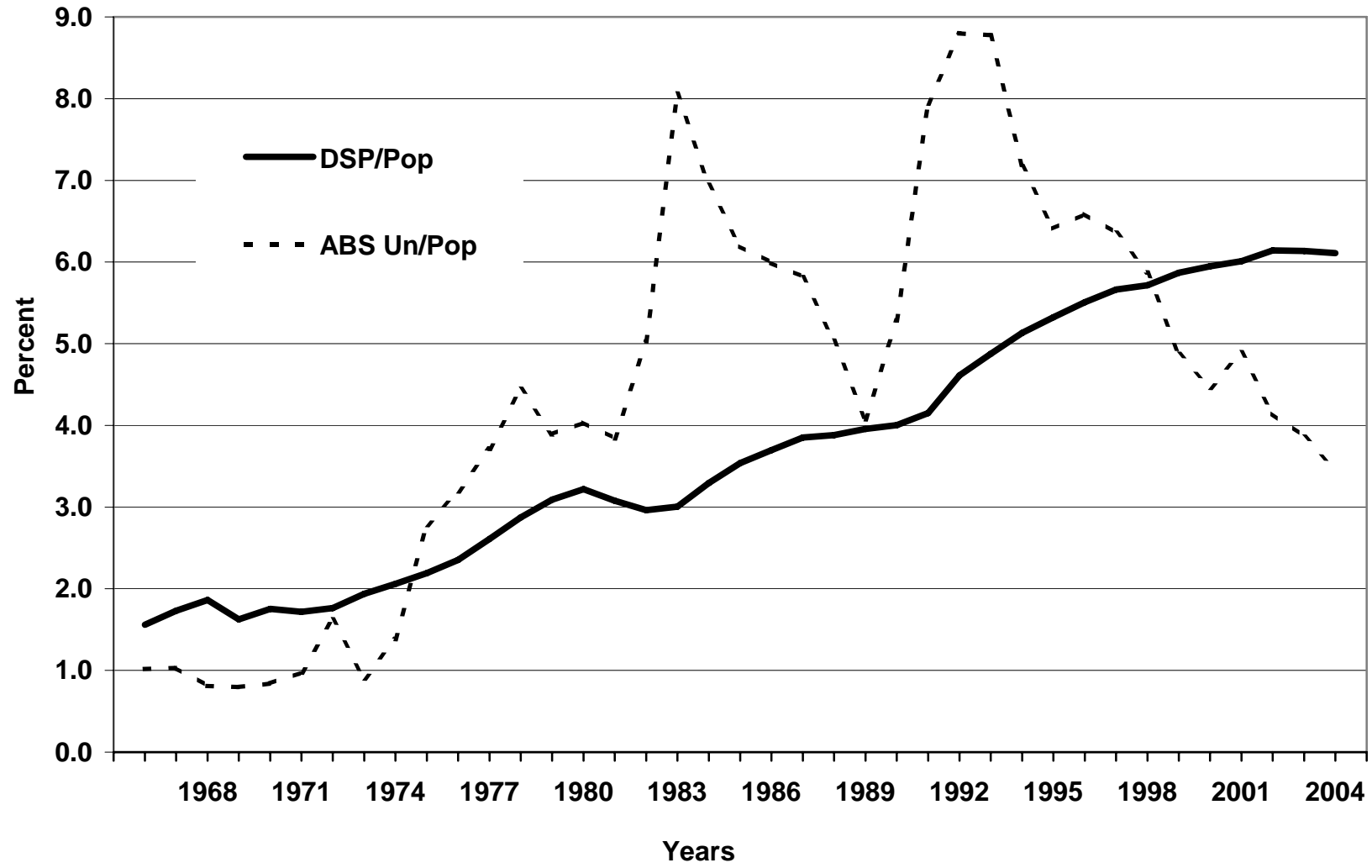
Income Support Patterns for the Female 1995 PPS Inflow



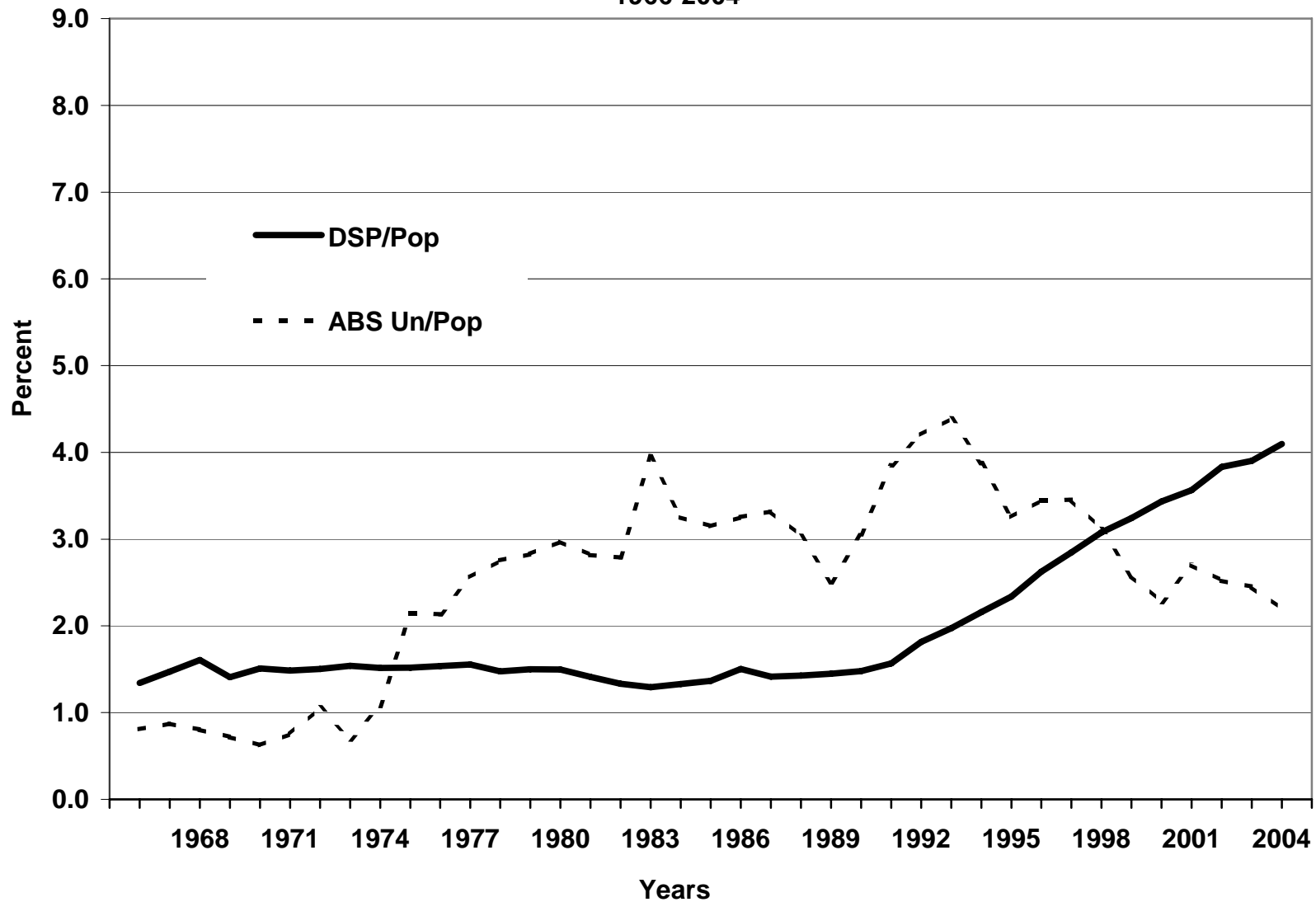
Labour and Welfare, Males and Females
1970-2004



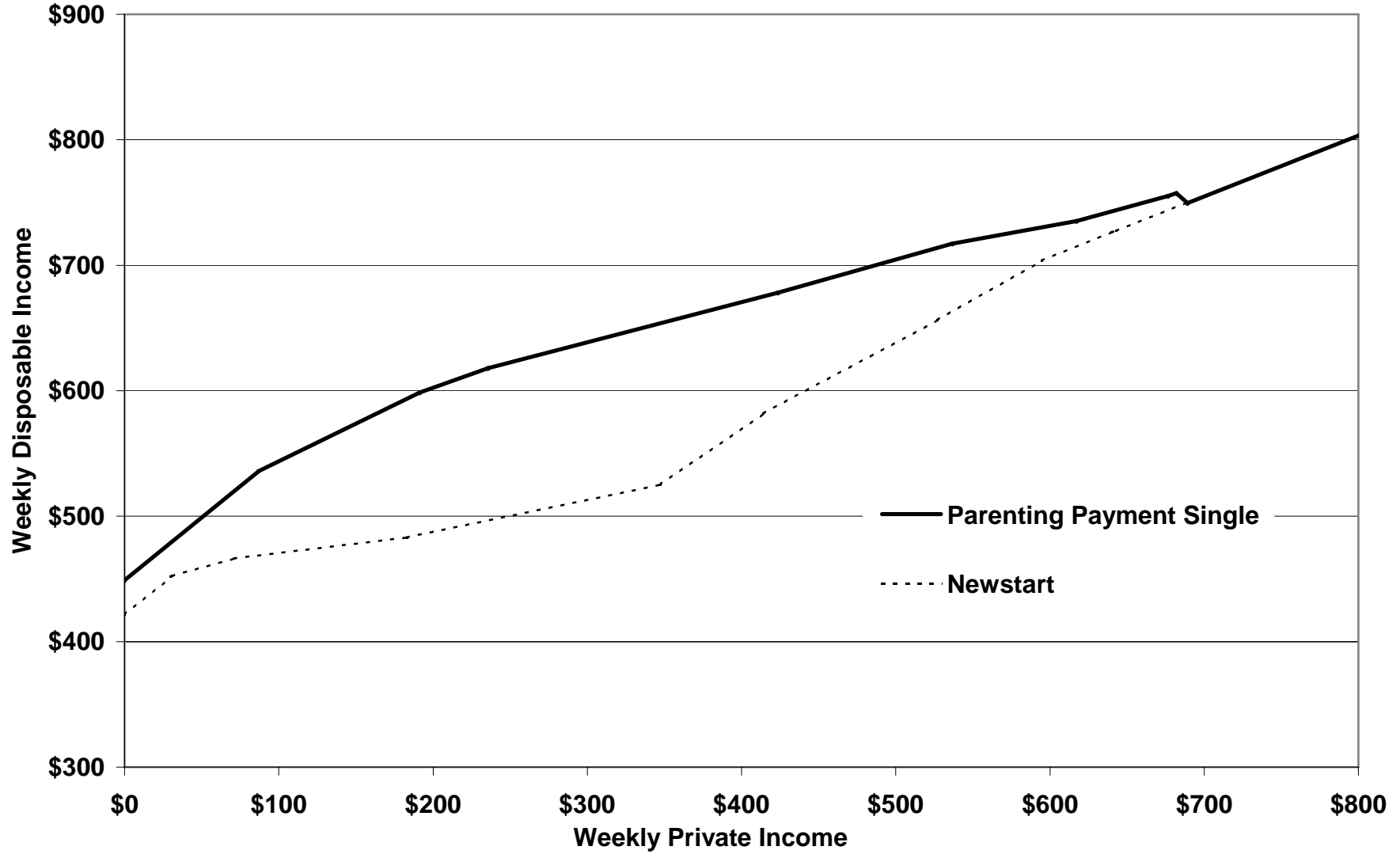
Males 15-64
1966-2004



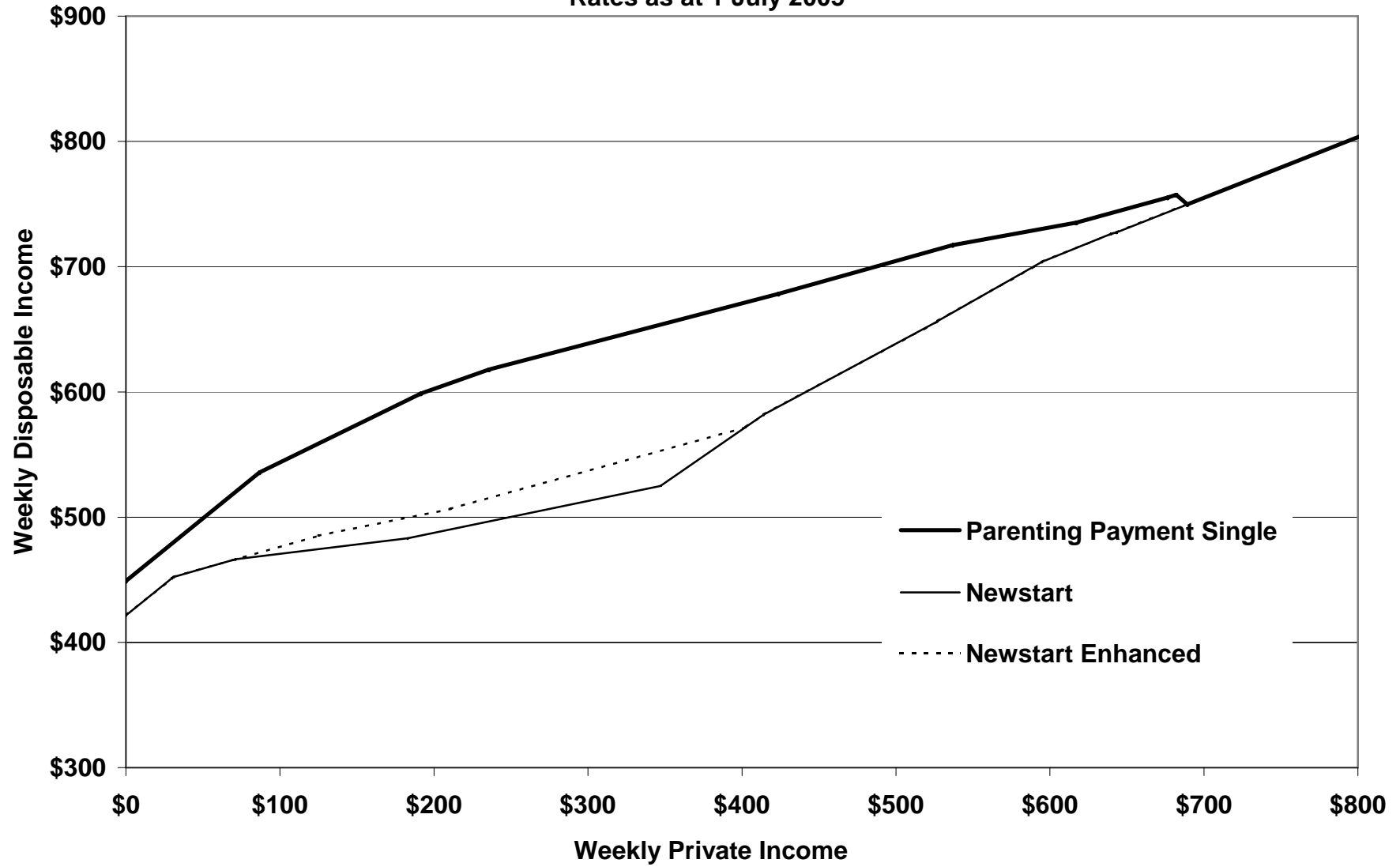
Females 15-64
1966-2004



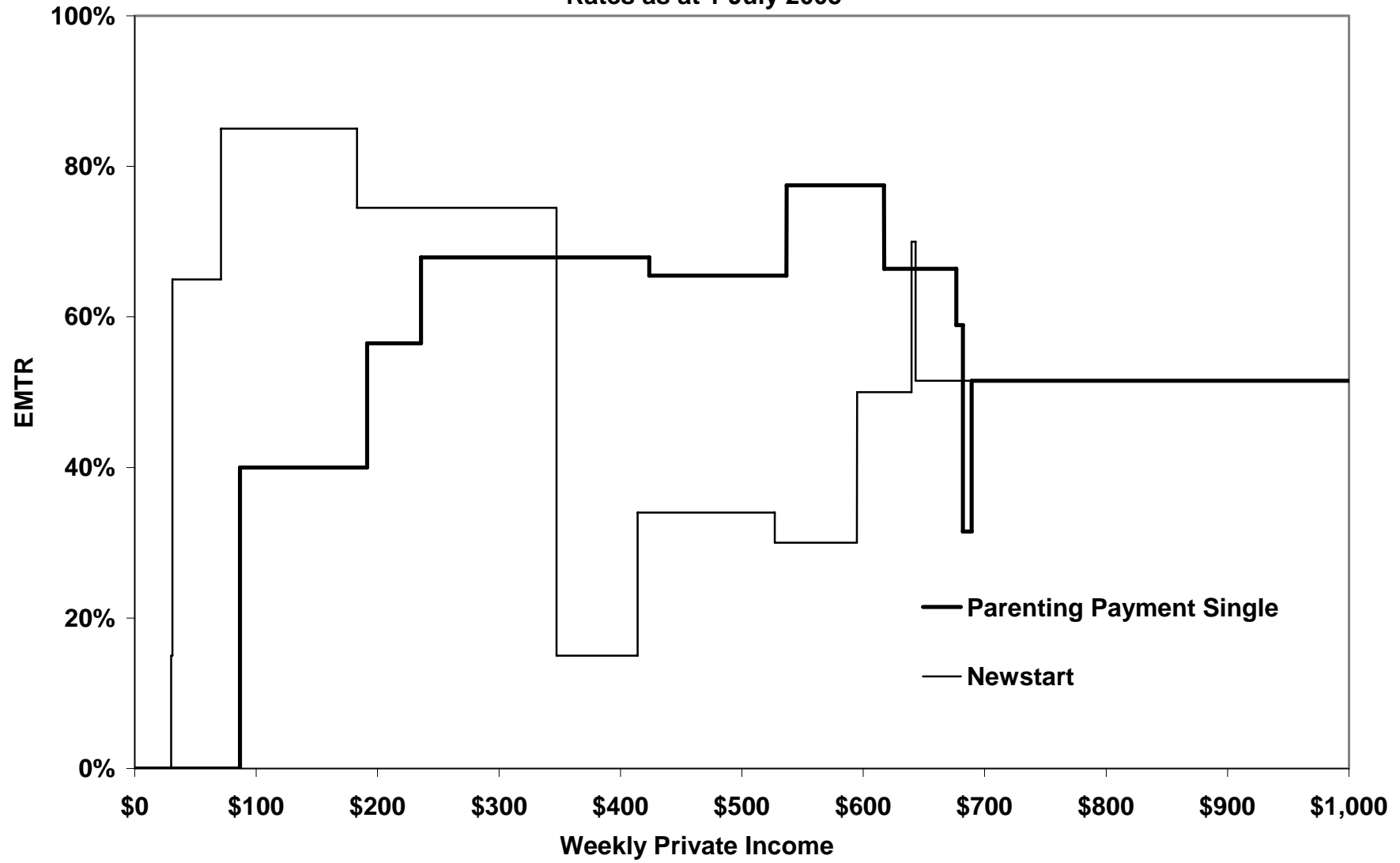
Disposable Income 2 children aged 5 - 12
Rates as at 1 July 2005



Disposable Income 2 children aged 5 - 12
Rates as at 1 July 2005



EMTR 2 children aged 5 - 12
Rates as at 1 July 2005



EMTR 2 children aged 5 - 12
Rates as at 1 July 2005

